



ALIGNING FEDERAL FUNDING TO BUILD RESILIENT, EQUITABLE COMMUNITIES

June 2021

VISION

To analyze and translate information, principles, and methods that support states, communities, and fiscal intermediaries in aligning resources and strategies across sectors and in moving the fast-flowing federal COVID-19 relief and recovery resources in a way that meets community needs and builds resilient, equitable futures.

PURPOSE

Billions in federal relief and recovery funds — including the American Rescue Plan Act, CARES Act, and fiscal year 2021 budget — present unprecedented opportunities for cities, counties, and states. This is a historic fiscal investment in public health, poised to redress gaps and inequities highlighted by the global COVID-19 pandemic. As states and local communities prepare to use this influx of funds, there is a great need to address upstream drivers of inequities and to work together in new ways to make meaningful progress toward improving population health.

The Georgia Health Policy Center (GHPC) will analyze available funding and best practices and share the steps and strategies needed to build a better, more equitable, resilient future for the nation.

KEY PRINCIPLES FOR A RESILIENT AND EQUITABLE RECOVERY



Aligning sectors and efforts is critical to advance health and equity.



A coordinated strategy guides the work and investments.



Intermediary organizations are ready and able to assist.



Community leadership drives lasting change.

Funding + Strategy → Resilient Equitable Communities

TARGET AUDIENCES

While federal government agencies will receive funding as a part of recovery efforts, never before has this amount of federal funding flowed directly to state and local communities. Cities, counties, and local fiscal intermediaries have a unique opportunity to use funding not only to stabilize budgets by filling resource gaps, but also in visionary ways that transform community health. GHPC will share its collective knowledge and practical strategies that municipalities and collaboratives might use to create maximum impact and long-term sustainability in their own communities.

PROCESS

Researchers from GHPC, Georgia State University, and George Washington University will analyze funding and best practices and share steps and strategies to help states and local communities prepare for the influx of funding, plan for sustainability, and build a more equitable future.

Participants come from university departments of economics, law, public health, social work, and urban planning, and bring specific expertise in access to care, aligning across sectors, behavioral health, community health systems development, health care financing, housing, labor, land use, local wellness funds, long-term services and supports, and rural health.

Convene Learning and Assessment Team

The cross-university learning and assessment team will participate in working sessions to expand understanding of the flow of federal dollars and survey best practices in coordinated strategy approaches.

Design Tools and Master Planning Approaches

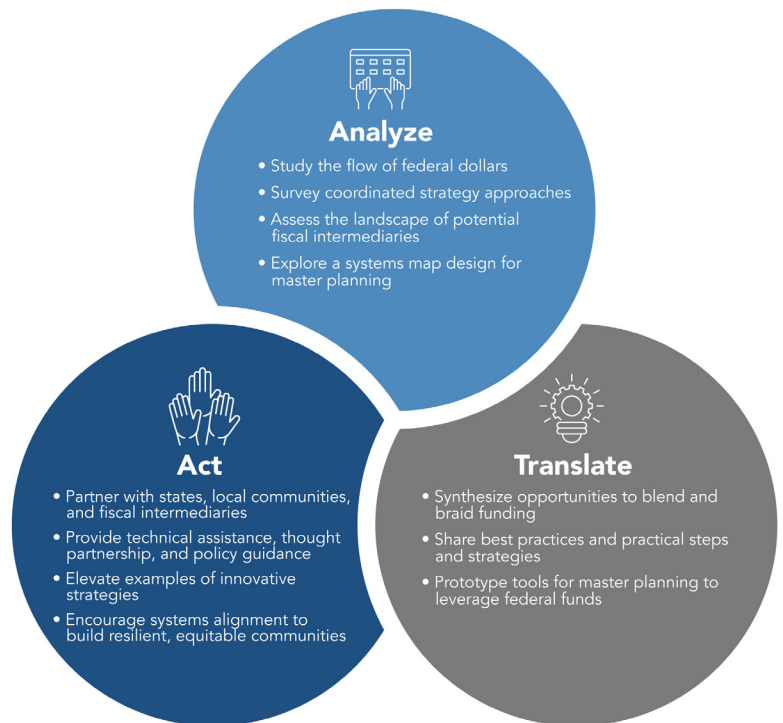
Information, expertise, and insights from the learning and assessment team will inform design of tools and tailored content available to targeted audiences.

Partner for Sustainable Action

GHPC can identify opportunities to leverage federal recovery investments to help agencies, collaboratives, and fiscal intermediaries connect existing resources with ambitious, community-driven strategies that blend and braid funds in a way that is accountable, equitable, and sustainable over time.

WHO DOES THIS IMPACT?

- Federal government agencies
- State government agencies
- Local city and county government agencies
- Cross-sector, health-oriented community collaboratives
- Local fiscal intermediaries, like Accountable Health Communities, local wellness funds, community foundations, conversion foundations, certified Pathways Hubs, Area Agencies on Aging, health systems' community benefit offices



For more information:

Georgia Health Policy Center
55 Park Place NE, 8th Floor
Atlanta, GA 30303
404-413-0314
ghpc.gsu.edu